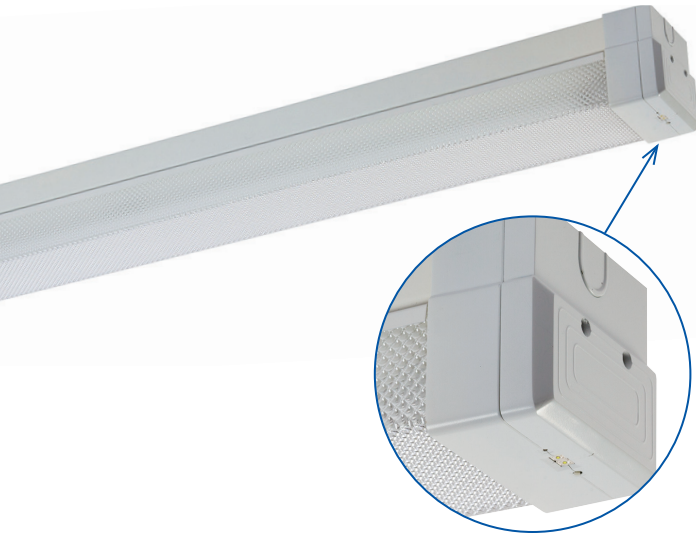


# T5 L10™ OPTIMUM SABRE DIFFUSED BATTEN



Thermal isolation pod

**UP TO 3 TIMES THE BATTERY LIFE** - Complete with L10™ Optimum lithium iron phosphate technology.

**WIDE BODY** - To cover junction boxes and provides ample space for heat generating components.

**TESTING OPTIONS** - Clevertest™, DLI compatible and Zoneworks® computerised testing options available in our Premium range.

The L10™ Optimum diffused batten is a non-maintained, C0=D63 C90=D63 classified surface mounted luminaire. Its features include an L10™ Optimum lithium battery which is housed in a thermal isolation pod at the end of the batten.

UP TO  
**3 TIMES**  
THE  
BATTERY LIFE

As the pod is external to the batten, the battery is protected from high temperatures that are normally found within the batten thereby extending battery life. This combination of lithium battery and thermally stable housing provides for up to three times the battery life, when compared to Premium NiCd products. Maintenance cost savings of up to 80% are achieved as there are less failures and hence labour costs over time.

UP TO  
**80%**  
MAINTENANCE  
SAVINGS

The battery is a lithium iron nanophosphate battery which contains no known carcinogens or heavy metal contaminants (unlike Nickel Cadmium and Nickel Metal Hydride batteries) and as they have three times the battery life they are the most environmentally responsible option.

L10™ Optimum lithium battens are available in either diffused, wire guard or IP65 weatherproof combinations, which address most emergency lighting applications including basement car parks, warehouses, fire stairs, industrial sites, commercial and public areas.

## HAWKEYE IS NOW AVAILABLE IN THE L10™ OPTIMUM BATTEN RANGE

UP TO  
**93%**  
ENERGY  
SAVINGS\*

The HAWKEYE microwave movement sensor is integrated into the body of the batten and is designed to turn off the batten's light source when no presence is detected by the sensor. The ability to turn the light source off when not required means less running time, saving energy and maintenance costs and money.



\*Based on 2x36W batten running 2 hours on per day with Hawkeye microwave sensor.

# T5 L10™ OPTIMUM SABRE DIFFUSED BATTEN

| SEGMENT - LAMP TYPE | PART NUMBER - STANDARD 240V |               |
|---------------------|-----------------------------|---------------|
| Fluorescent Lamp    | A2 Electronic Ballast       | DLI Ballast   |
| 240V 1x14W          | FBS114-DIF-A2               | FBS114-DIF-DB |
| 240V 2x14W          | FBS214-DIF-A2               | FBS214-DIF-DB |
| 240V 1x28W          | FBS128-DIF-A2               | FBS128-DIF-DB |
| 240V 2x28W          | FBS228-DIF-A2               | FBS228-DIF-DB |

| SPECIFICATIONS - STANDARD 240V |                  |
|--------------------------------|------------------|
| Fluorescent Lamp               | L x W x H (mm)   |
| 1x14W                          | 630 x 120 x 110  |
| 2x14W                          | 630 x 120 x 110  |
| 1x28W                          | 1238 x 120 x 110 |
| 2x28W                          | 1238 x 120 x 110 |

| SEGMENT - LAMP TYPE   | PART NUMBER & TESTING OPTIONS - L10 EMERGENCY BATTEN - NON MAINTAINED EMERGENCY POD |                   |                     |                    |                   |
|-----------------------|---|-------------------|---------------------|--------------------|-------------------|
| A2 Electronic Ballast | Single-point  | Clevertest™       | DATA                | DLI*               | Zoneworks         |
| L10 1x14W SUSTAINED   | LBS114S-DIF-A2  | LBS114S-DIF-A2-CT | LBS114S-DIF-A2-DATA | LBS114S-DIF-A2-DLI | LBS114S-DIF-A2-ZW |
| L10 2x14W SUSTAINED   | LBS214S-DIF-A2  | LBS214S-DIF-A2-CT | LBS214S-DIF-A2-DATA | LBS214S-DIF-A2-DLI | LBS214S-DIF-A2-ZW |
| L10 1x28W SUSTAINED   | LBS128S-DIF-A2  | LBS128S-DIF-A2-CT | LBS128S-DIF-A2-DATA | LBS128S-DIF-A2-DLI | LBS128S-DIF-A2-ZW |
| L10 2x28W SUSTAINED   | LBS228S-DIF-A2  | LBS228S-DIF-A2-CT | LBS228S-DIF-A2-DATA | LBS228S-DIF-A2-DLI | LBS228S-DIF-A2-ZW |

| SEGMENT - LAMP TYPE       | PART NUMBER & TESTING OPTIONS - L10 EMERGENCY BATTEN - NON MAINTAINED EMERGENCY POD |                   |                     |                    |                   |
|---------------------------|---|-------------------|---------------------|--------------------|-------------------|
| A1 DLI Electronic Ballast | Single-point  | Clevertest™       | DATA                | DLI*               | Zoneworks         |
| L10 1x14W SUSTAINED       | LBS114S-DIF-DB  | LBS114S-DIF-DB-CT | LBS114S-DIF-DB-DATA | LBS114S-DIF-DB-DLI | LBS114S-DIF-DB-ZW |
| L10 2x14W SUSTAINED       | LBS214S-DIF-DB  | LBS214S-DIF-DB-CT | LBS214S-DIF-DB-DATA | LBS214S-DIF-DB-DLI | LBS214S-DIF-DB-ZW |
| L10 1x28W SUSTAINED       | LBS128S-DIF-DB  | LBS128S-DIF-DB-CT | LBS128S-DIF-DB-DATA | LBS128S-DIF-DB-DLI | LBS128S-DIF-DB-ZW |
| L10 2x28W SUSTAINED       | LBS228S-DIF-DB  | LBS228S-DIF-DB-CT | LBS228S-DIF-DB-DATA | LBS228S-DIF-DB-DLI | LBS228S-DIF-DB-ZW |

\* DLI battens are listed with standard (non DLI) electronic ballast. The L10 LED Emergency Pod has DLI compatible emergency control packs.

## SPECIFICATIONS - L10 OPTIMUM DIFFUSED EMERGENCY BATTEN WITH NON MAINTAINED LED EMERGENCY POD

| Fluorescent Lamp | L x W x H (mm)   | C0  | C90 |
|------------------|------------------|-----|-----|
| 1x14W            | 666 x 120 x 110  | D63 | D63 |
| 2x14W            | 666 x 120 x 110  | D63 | D63 |
| 1x28W            | 1274 x 120 x 110 | D63 | D63 |
| 2x28W            | 1274 x 120 x 110 | D63 | D63 |

## 240V AND L10 OPTIMUM

Wide body fluorescent batten. Wire guard or diffused body options to choose from.

240V and premium Nickel Cadmium emergency versions available. T5, 840 Tri Phosphor fluorescent lamps included.

## TESTING OPTIONS

**clevertest** Exit and Emergency luminaires automatically test every six months.

**ZONEWORKS** A real-time, automatic monitoring and testing facility for emergency luminaires.

## SPACING TABLE & MOUNTING HEIGHTS

| Classification | 2.1m | 2.4m | 2.7m | 3m   | 3.3m | 3.6m | 4m   | 5m   | 6m   | 7m   | 8m   | 10m  | 15m  | 20m  |
|----------------|------|------|------|------|------|------|------|------|------|------|------|------|------|------|
| D63            | 19.4 | 20.3 | 21.1 | 21.8 | 22.4 | 23.0 | 23.7 | 25.2 | 26.4 | 27.4 | 28.1 | 28.9 | 28.0 | 22.5 |

Based on minimum light level of 0.2 lux

Version: October 2014-4

Please check our website for your closest Clevertronics office and local representative. Due to changes in industry standards and Clevertronics policy of product improvement, specification details are subject to change without notice.

[www.clevertronics.com.au](http://www.clevertronics.com.au)

