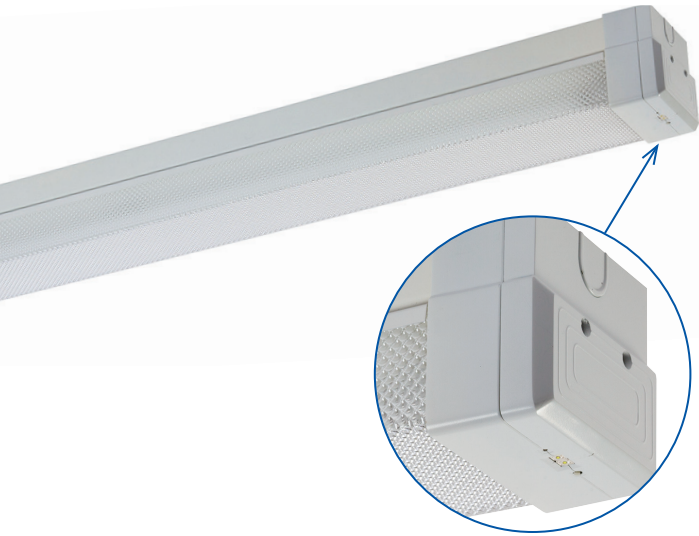


# T8 L10™ OPTIMUM SABRE DIFFUSED BATTEN



Thermal isolation pod

**UP TO 3 TIMES THE BATTERY LIFE** - Complete with L10™ Optimum lithium iron phosphate technology.

**WIDE BODY** - To cover junction boxes and provides ample space for heat generating components.

**TESTING OPTIONS** - Clevertest™, DLI compatible and Zoneworks® computerised testing options available in our Premium range.

The L10™ Optimum diffused batten is a non-maintained, C0=D63 C90=D63 classified surface mounted luminaire. Its features include an L10™ Optimum lithium battery which is housed in a thermal isolation pod at the end of the batten.

UP TO  
**3 TIMES**  
THE  
BATTERY LIFE

As the pod is external to the batten, the battery is protected from high temperatures that are normally found within the batten thereby extending battery life. This combination of lithium battery and thermally stable housing provides for up to three times the battery life, when compared to Premium NiCd products. Maintenance cost savings of up to 80% are achieved as there are less failures and hence labour costs over time.

UP TO  
**80%**  
MAINTENANCE  
SAVINGS

The battery is a lithium iron nanophosphate battery which contains no known carcinogens or heavy metal contaminants (unlike Nickel Cadmium and Nickel Metal Hydride batteries) and as they have three times the battery life they are the most environmentally responsible option.

L10™ Optimum lithium battens are available in either diffused, wire guard or IP65 weatherproof combinations, which address most emergency lighting applications including basement car parks, warehouses, fire stairs, industrial sites, commercial and public areas.

## HAWKEYE IS NOW AVAILABLE IN THE L10™ OPTIMUM BATTEN RANGE

UP TO  
**93%**  
ENERGY  
SAVINGS\*

The HAWKEYE microwave movement sensor is integrated into the body of the batten and is designed to turn off the batten's light source when no presence is detected by the sensor. The ability to turn the light source off when not required means less running time, saving energy and maintenance costs and money.



\*Based on 2x36W batten running 2 hours on per day with Hawkeye microwave sensor.

# T8 L10™ OPTIMUM SABRE DIFFUSED BATTEN

SEGMENT - LAMP TYPE	PART NUMBER - STANDARD 240V	
Fluorescent Lamp	A2 Electronic Ballast	DLI Ballast
240V 1x18W	FBS118-DIF-A2	FBS118-DIF-DB
240V 2x18W	FBS218-DIF-A2	FBS218-DIF-DB
240V 1x36W	FBS136-DIF-A2	FBS136-DIF-DB
240V 2x36W	FBS236-DIF-A2	FBS236-DIF-DB

SPECIFICATIONS - STANDARD 240V	
Fluorescent Lamp	L x W x H (mm)
1x18W	630 x 120 x 110
2x18W	630 x 120 x 110
1x36W	1238 x 120 x 110
2x36W	1238 x 120 x 110

SEGMENT - LAMP TYPE	PART NUMBER & TESTING OPTIONS - L10 EMERGENCY BATTEN - NON MAINTAINED EMERGENCY POD				
A2 Electronic Ballast	Single-point	Clevertest™	DATA	DLI*	Zoneworks
L10 1x18W SUSTAINED	LBS118S-DIF-A2	LBS118S-DIF-A2-CT	LBS118S-DIF-A2-DATA	LBS118S-DIF-A2-DLI	LBS118S-DIF-A2-ZW
L10 2x18W SUSTAINED	LBS218S-DIF-A2	LBS218S-DIF-A2-CT	LBS218S-DIF-A2-DATA	LBS218S-DIF-A2-DLI	LBS218S-DIF-A2-ZW
L10 1x36W SUSTAINED	LBS136S-DIF-A2	LBS136S-DIF-A2-CT	LBS136S-DIF-A2-DATA	LBS136S-DIF-A2-DLI	LBS136S-DIF-A2-ZW
L10 2x36W SUSTAINED	LBS236S-DIF-A2	LBS236S-DIF-A2-CT	LBS236S-DIF-A2-DATA	LBS236S-DIF-A2-DLI	LBS236S-DIF-A2-ZW

SEGMENT - LAMP TYPE	PART NUMBER & TESTING OPTIONS - L10 EMERGENCY BATTEN - NON MAINTAINED EMERGENCY POD				
A1 DLI Electronic Ballast	Single-point	Clevertest™	DATA	DLI*	Zoneworks
L10 1x18W SUSTAINED	LBS118S-DIF-DB	LBS118S-DIF-DB-CT	LBS118S-DIF-DB-DATA	LBS118S-DIF-DB-DLI	LBS118S-DIF-DB-ZW
L10 2x18W SUSTAINED	LBS218S-DIF-DB	LBS218S-DIF-DB-CT	LBS218S-DIF-DB-DATA	LBS218S-DIF-DB-DLI	LBS218S-DIF-DB-ZW
L10 1x36W SUSTAINED	LBS136S-DIF-DB	LBS136S-DIF-DB-CT	LBS136S-DIF-DB-DATA	LBS136S-DIF-DB-DLI	LBS136S-DIF-DB-ZW
L10 2x36W SUSTAINED	LBS236S-DIF-DB	LBS236S-DIF-DB-CT	LBS236S-DIF-DB-DATA	LBS236S-DIF-DB-DLI	LBS236S-DIF-DB-ZW

\* DLI battens are listed with standard (non DLI) electronic ballast. The L10 LED Emergency Pod has DLI compatible emergency control packs.

## SPECIFICATIONS - L10 OPTIMUM DIFFUSED EMERGENCY BATTEN WITH NON MAINTAINED LED EMERGENCY POD

Fluorescent Lamp	L x W x H (mm)	C0	C90
1x18W	666 x 120 x 110	D63	D63
2x18W	666 x 120 x 110	D63	D63
1x36W	1274 x 120 x 110	D63	D63
2x36W	1274 x 120 x 110	D63	D63


## 240V AND L10 OPTIMUM

Wide body fluorescent batten. Wire guard or diffused body options to choose from.

240V and premium Nickel Cadmium emergency versions available. T8, 840 Tri Phosphor fluorescent lamps included.

## TESTING OPTIONS

 Exit and Emergency luminaires automatically test every six months.

 A real-time, automatic monitoring and testing facility for emergency luminaires.

## SPACING TABLE & MOUNTING HEIGHTS

Classification	2.1m	2.4m	2.7m	3m	3.3m	3.6m	4m	5m	6m	7m	8m	10m	15m	20m
D63	19.4	20.3	21.1	21.8	22.4	23.0	23.7	25.2	26.4	27.4	28.1	28.9	28.0	22.5

Based on minimum light level of 0.2 lux

Version: October 2014-4

Please check our website for your closest Clevertronics office and local representative. Due to changes in industry standards and Clevertronics policy of product improvement, specification details are subject to change without notice.

[www.clevertronics.com.au](http://www.clevertronics.com.au)

