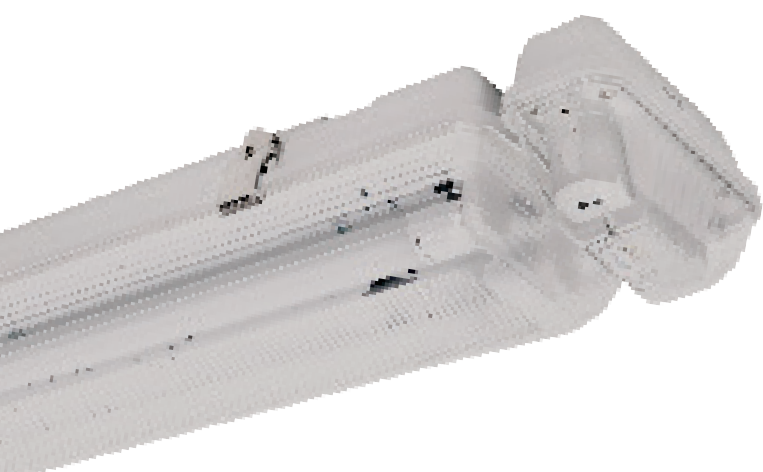


# T8 LP™ PREMIUM IP65 WEATHERPROOF BATTEN



**UP TO TWICE THE BATTERY LIFE** - Complete with LP™ Premium lithium iron phosphate technology.

**WIDE BODY** - To cover junction boxes and provides ample space for heat generating components.

**TESTING OPTIONS** - Clevertest™, DLI compatible and Zoneworks® computerised testing options available in our Premium range.

The LP™ Premium IP65 weatherproof batten is a non-maintained, C0=D40 C90=D40 classified surface mounted luminaire. Its features include an LP™ Premium lithium battery which is housed in a thermal isolation pod at the end of the batten.

UP TO  
**TWICE**  
THE  
BATTERY LIFE

As the pod is external to the batten, the battery is protected from high temperatures that are normally found within the batten thereby extending battery life. This combination of lithium battery and thermally stable housing provides for up to twice the battery life, when compared to Premium NiCd products. Maintenance cost savings of up to 50% are achieved as there are less failures and hence labour costs over time.

UP TO  
**50%**  
MAINTENANCE  
SAVINGS

The battery is a lithium iron phosphate battery which contains no known carcinogens or heavy metal contaminants (unlike Nickel Cadmium and Nickel Metal Hydride batteries) and as they have twice the battery life they are the more environmentally responsible option.

LP™ Premium lithium battens are available in either diffused, wire guard or IP65 weatherproof combinations, which address most emergency lighting applications including basement car parks, warehouses, fire stairs, industrial sites, commercial and public areas.

## HAWKEYE IS NOW AVAILABLE IN THE LP™ PREMIUM BATTEN RANGE

UP TO  
**88%**  
ENERGY  
SAVINGS\*

The HAWKEYE microwave movement sensor is integrated into the body of the batten and is designed to turn off the batten's light source when no presence is detected by the sensor. The ability to turn the light source off when not required means less running time, saving energy and maintenance costs and money.



\*Based on 2x36W batten running 2 hours on per day with Hawkeye microwave sensor.

# T8 LP™ PREMIUM IP65 WEATHERPROOF BATTEN

SEGMENT - LAMP TYPE	PART NUMBER - STANDARD 240V	
Fluorescent Lamp	A2 Electronic Ballast	DLI Ballast
240V 1x18W	FWB118-P-A2	FWB118-P-DB
240V 2x18W	FWB218-P-A2	FWB218-P-DB
240V 1x36W	FWB136-P-A2	FWB136-P-DB
240V 2x36W	FWB236-P-A2	FWB236-P-DB
240V 1x58W	FWB158-P-A2	FWB158-P-DB
240V 2x58W	FWB258-P-A2	FWB258-P-DB

SPECIFICATIONS - STANDARD 240V	
Fluorescent Lamp	L x W x H (mm)
1x18W	655 x 160 x 105
2x18W	655 x 160 x 105
1x36W	1265 x 160 x 105
2x36W	1265 x 160 x 105
1x58W	1565 x 160 x 105
2x58W	1565 x 160 x 105

SEGMENT - LAMP TYPE	PART NUMBER & TESTING OPTIONS - LP EMERGENCY BATTEN - NON MAINTAINED EMERGENCY POD				
A2 Electronic Ballast	Single-point	Clevertest™	DATA	DLI*	Zoneworks
LP 1x18W SUSTAINED	CWB118S-P-A2	CWB118S-P-A2-CT	CWB118S-P-A2-DATA	CWB118S-P-A2-DLI	CWB118S-P-A2-ZW
LP 2x18W SUSTAINED	CWB218S-P-A2	CWB218S-P-A2-CT	CWB218S-P-A2-DATA	CWB218S-P-A2-DLI	CWB218S-P-A2-ZW
LP 1x36W SUSTAINED	CWB136S-P-A2	CWB136S-P-A2-CT	CWB136S-P-A2-DATA	CWB136S-P-A2-DLI	CWB136S-P-A2-ZW
LP 2x36W SUSTAINED	CWB236S-P-A2	CWB236S-P-A2-CT	CWB236S-P-A2-DATA	CWB236S-P-A2-DLI	CWB236S-P-A2-ZW
LP 1x58W SUSTAINED	CWB158S-P-A2	CWB158S-P-A2-CT	CWB158S-P-A2-DATA	CWB158S-P-A2-DLI	CWB158S-P-A2-ZW
LP 2x58W SUSTAINED	CWB258S-P-A2	CWB258S-P-A2-CT	CWB258S-P-A2-DATA	CWB258S-P-A2-DLI	CWB258S-P-A2-ZW

\*DLI battens are listed with the LP LED D40 Emergency Pod with DLI compatible emergency control packs. For DLI fluorescent ballasts, change the A2 to DB within relevant product code.



## SPECIFICATIONS - LP PREMIUM IP65 WEATHERPROOF BATTEN WITH NON MAINTAINED LED EMERGENCY POD

Fluorescent Lamp	L x W x H (mm)	C0	C90
1x18W	720 x 160 x 105	D40	D40
2x18W	720 x 160 x 105	D40	D40
1x36W	1330 x 160 x 105	D40	D40
2x36W	1330 x 160 x 105	D40	D40
1x58W	1630 x 160 x 105	D40	D40
2x58W	1630 x 160 x 105	D40	D40

## 240V AND LP PREMIUM

Wide body fluorescent batten. Wire guard or diffused body options to choose from. 240V and LP PREMIUM emergency versions available. T8, 840 Tri Phosphor fluorescent lamps included.

## TESTING OPTIONS

-  Exit and Emergency luminaires automatically test every six months.
-  A real-time, automatic monitoring and testing facility for emergency luminaires.

## SPACING TABLE & MOUNTING HEIGHTS

Classification	2.1m	2.4m	2.7m	3m	3.3m	3.6m	4m	5m	6m	7m	8m	10m	15m
D40	16.7	17.4	18.0	18.6	19.1	19.6	20.1	21.3	22.1	22.7	23.0	23.1	19.4

Based on minimum light level of 0.2 lux

Version: October 2014-4

Please check our website for your closest Clevertronics office and local representative. Due to changes in industry standards and Clevertronics policy of product improvement, specification details are subject to change without notice.

[www.clevertronics.com.au](http://www.clevertronics.com.au)

