



Argonaut PRO

The Clevertronics range of Argonaut PRO LED Weatherproof Battens have been specially designed for use in **underground car parks, stairwells, fire stairs, corridors and back of house areas** to provide maximum energy and maintenance savings.



Reduction in
Maintenance Costs



Reduction in
Energy Costs

Features & Benefits:

Robust & Weatherproof	IK09 Impact rating and IP66 Ingress protection with UV stabilised polycarbonate diffuser
Chemical resistant	Glass Fibre Reinforced Plastic (GRP) base offering high chemical resistance
Microwave sensors	All products available with Microwave sensors with adjustable standby light to save on energy cost
Lamps	Long life LED 50,000hrs [L70, B10 Ta 40°C] Ra>80
Light output	3000lm to 6000lm options.
Light Distribution	Outstanding light uniformity and vertical illumination levels
Efficacy	Up to 113 lm/W at full light output
Batteries	Available in LP Premium and L10 Optimum so you can save up to 90% on battery replacement
Testing	Available with Zoneworks XT, Clevertest or DLI
Applications	Ideal for car parks, stairwells, corridors and back of office areas

The wide beam distribution from the Argonaut PRO range ensures that they provide excellent uniformity and illuminance levels at maximum spacing requirements. With an IP66 rating and built to an IK09 impact rating the Argonaut PRO product range is built to withstand the environments they are exposed to including areas where high chemical resistance is required.

All Argonaut PRO battens are fitted with long lifetime LEDs (50,000hrs) and are available in the LP Premium and L10 Optimum ranges which provide up to 3 times the battery service life compared to NiCd and NiMH alternatives. Battery life is extended through the use of Lithium Iron Phosphate battery technology and also the use of an emergency pod design which keeps the battery away from heat sources and therefore extends the battery life.

Products are available in 600mm and 1200mm lengths and have a very high efficacy of up to 113lm/W at full power, delivering a superior lighting lifetime outcome through its light distribution.



TECHNICAL SPECIFICATIONS:

	ARGONAUT PRO 2FT		ARGONAUT PRO 4FT		
Construction	Glass Fibre Reinforced Plastic (GRP) Base and UV Stabilised Polycarbonate Diffuser				
Mounting	Ceiling/Wall Mounted				
Lamp(s)	LED Strip Module, 4,000K, 50,000h Product Life [L70, B10 Ta 40°C] Ra>80				
Operating Volt	240V AC; 50Hz				
Power Factor	0.95				
IP Rating	IP66				
Operating Temp	0°C to 40°C				
Impact Rating (Diffuser)	IK09	IK08	IK09		

NON-EMERGENCY

Micro Sensor with Hi/Lo Lighting Function (Optional)	✓	-	✓	✓	✓
Total Power	29W	36W	TBC	TBC	55W
Standby Power*	5W	TBC	TBC	TBC	9W
Nominal Total Light Output	3000lm	4000lm	3000lm	4000lm	6100lm
Efficacy	103	111	TBC	TBC	110

*Standby at 10% Light Output (MS.HL version)

EMERGENCY

LP Premium	✓	✓	✓	✓	✓
L10 Optimum	✓	✓	✓	✓	✓
Integral Battery	2000lm	✓	✓	4000lm	✓
Operating Mode	Sustained/Maintained/Non-Maintained				
Charging Method	Intelligent Current Limited Constant Voltage				
AS2293 Classification	C ₀ =D63 ; C ₉₀ =D50				
Testing Options	Manual Clevertest, Self Test DLI Addressable Lighting Interface Zoneworks Computerised Testing				

PART NUMBERS

240V	FWB2LED-P-WB-PRO	FWB4LED-P-PRO	FWB4LED-P-WB-PRO-LO	FWB4LED-P-WB-PRO	FWB4LED-P-WB-PRO-HO
LP Premium	CWB2LEDS-P-WB-PRO	CWB4LEDS-P-PRO	CWB4LEDS-P-WB-PRO-LO	CWB4LEDS-P-WB-PRO	CWB4LEDS-P-WB-PRO-HO
L10 Optimum	LWB2LEDS-P-WB-PRO	LWB4LEDS-P-PRO	LWB4LEDS-P-WB-PRO-LO	LWB4LEDS-P-WB-PRO	LWB4LEDS-P-WB-PRO-HO
	Coming Soon! February 2017	Available Now	Coming Soon! April 2017	Coming Soon! April 2017	Coming Soon! February 2017

Product Options:

LWB4LEDS-P-WB-PRO-XX-XX-XX-XX

Output Options	
N/A	Standard Output
-LO	Low Power Output
-HO	High Light Output
Motion Sensor Options	
N/A	No Sensor
-MS-HL	Microwave Sensor, Hi/Lo Lighting levels
Testing Options	
N/A	Manual Testing
-CT	Clevertest, Self-test
-DLI	DLI Compatible
-ZW	Zoneworks Computerised Testing

Range Options:

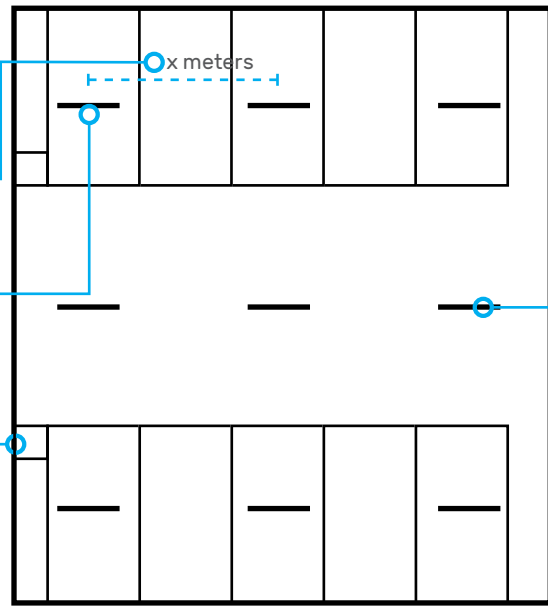
<p>LP™ PREMIUM Lithium Iron Phosphate</p>	<p>Proven Premium Lithium Project Performance</p> <ul style="list-style-type: none"> • Australia No.1 selling Emergency Lighting Range • Over 50% maintenance saving vs Ni-Cd • Full comprehensive range • Self-test and monitored testing options
<p>L10™ OPTIMUM Lithium Nanophosphate*</p>	<p>Nothing else competes with Nanophosphate</p> <ul style="list-style-type: none"> • Lowest total ownership cost on the market • 40% Longer battery life vs any other lithium products • 50% Maintenance savings vs any other lithium products • Full comprehensive range • Self-test and monitored testing options

CAR PARK:

Considerations	Argonaut PRO Solution
Achieving the lux requirement at the desired location within the car park	Argonaut range of products > have various sizes and light output
Achieving optimal spacing of emergency luminaires based on the classification	Argonaut products are D63 & D50 Emergency classification luminaires resulting in wide spacings
Start up performance of the luminaires in cold temperatures to achieve light output required	Argonaut LED strips & arrays > start up to maximum output instantaneously and are not affected by low temp conditions
Previous holes and paint marks can be covered up with new fittings if retrofitting	Argonaut wide body battens > covers all previous footprints and therefore not requiring painting
Ensure uniformity of light output on the floor surface to prevent spotlight effect	Light distribution of Argonaut PRO battens are similar to fluorescent WP battens delivering excellent uniformity
Ensure vertical surfaces (post, columns) are illuminated so they can be seen properly by occupants, especially vehicles	The light distribution of the Argonaut PRO batten range delivers light on vertical surfaces which often cannot be achieved through other LED luminaires

AS/NZS1680.2: Recommendation for Circulation Space and Other General Areas.

Type of interior or activity	Maintained illuminance (lx)
Entrances / Driveways:	
(a) During daytime	
- first 15m	800
- next 4m	160
(b) During night time	160
Normal parking spaces	40



Flexibility to choose fitting configuration and options to meet requirements:

- Length
- Shape
- Lumen output
- Battery type
- Testing methods
- Occupancy sensor



STAIRWELLS:

Considerations	Argonaut PRO Solution
Ensure luminaires can achieve 80 lux average on the stairwell tread and landings	Argonaut range of products > have various sizes and light output
Wall or ceiling mounted fitting requirements	Argonaut range can be wall or ceiling mounted
Can previous holes and paint marks be covered up with new fittings if retrofitting	Argonaut wide body battens > covers all previous footprints and therefore not requiring painting
Lighting up of vertical surfaces (post, columns) through wide light distribution	The light distribution of the Argonaut batten range delivers light on vertical surfaces which often cannot be achieved through other LED luminaires
Height, width and length of chamber will affect the selected luminaire shape and lumen output requirements	Argonaut Range of products > have various shapes, sizes and light output

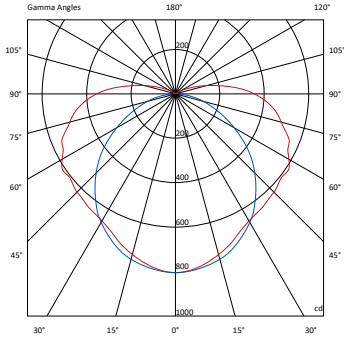
AS/NZS1680.2: Recommendation for Circulation Space and Other General Areas.

Type of interior or activity	Maintained illuminance (lx)
Stairwell (internal)	80



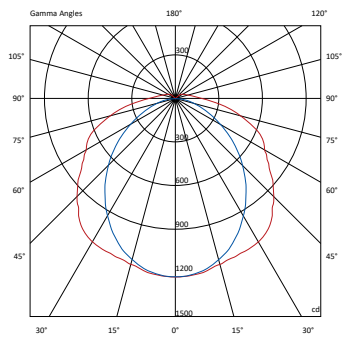
**Argonaut PRO 600mm
Wide body 3000lm**

FWB2LED-P-WB-PRO



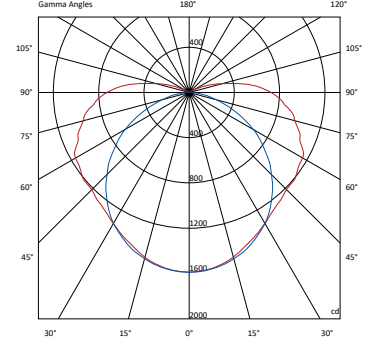
**Argonaut PRO 1200mm
Narrow body 4000lm**

FWB4LED-P-PRO



**Argonaut PRO 1200mm
Wide body 6000lm**

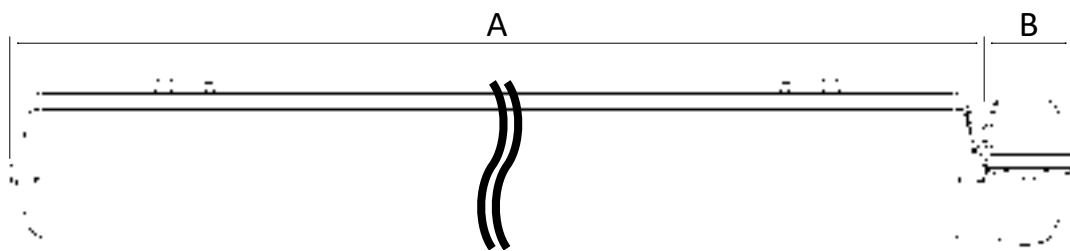
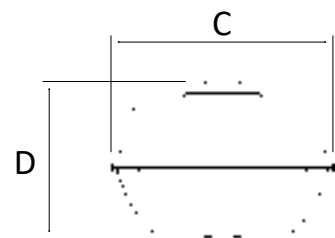
FWB4LED-P-WB-PRO-HO



Dimensions (mm):

	A	B*	C	D
Wide Body, 600mm	662mm	60mm	158mm	100mm
Narrow Body, 1200mm	1169mm	60mm	120mm	100mm
Wide Body, 1200mm	1272mm	60mm	158mm	100mm

*Pod on Emergency Battens Only



Victoria:

195 Chesterville Road
Moorabbin VIC 3189
Phone: +61 3 9559 2700
Fax: +61 3 9559 2799

New South Wales:

9 Distribution Place
Seven Hills NSW 2147
Phone: +61 2 8805 6400
Fax: +61 2 8805 6444

Queensland:

Unit 2 / 8-12 Monte-Khoury Drive
Loganholme QLD 4129
Phone: +61 7 3442 9700
Fax: +61 7 3442 9777

South Australia:

Unit 2 / 19 Main Terrace,
Richmond, SA 5033
Phone: +61 8 8301 8800
Fax: +61 8 8351 8286

Western Australia:

Unit 1 / 10 Pavers Circle
Malaga, WA 6090
Phone: +61 8 9248 3720
Fax: +61 8 9248 3725

New Zealand:

Unit 22 / 761 Great South Road
Penrose, Auckland
Phone: +64 800 548 448