



Case Study

Uniting Aldersgate is a comforting aged care home in Lilyfield, in the heart of Sydney's vibrant inner west.

GHD was appointed by Stephen Edwards Constructions to undertake a fire engineering assessment for this facility.

Challenges

An edge-case scenario had arisen regarding the location and usage of an external fire egress stairway due to the site constraints. The external stairs could become unsafe during particular fire scenarios involving the underground carpark and/or the bedrooms rooms near the egress. A solution was needed to assist in directing building occupants to an alternative exit.

Solution

GHD had developed a Fire Engineering Performance Solution design which utilised the functionality of the CleverEVAC exit signage system.

In the scenario where a fire event occurred in the immediate vicinity of the stairwell, the Dynamic Signage helps to guide staff and residents towards an alternative exit, away from the affected stair, using both positive and negative reinforcement.



This was achieved using a combination of Dynamic RED X and Dynamic GREEN signage, as shown on the next page.

Location
Lilyfield NSW

Completed
March 2021

Number of Fittings
5 CleverEVAC signs

Product range
Dynamic RED X
Dynamic GREEN
Cleverfit PRO style
LP Lithium Battery Range

Site Owner
Uniting Aged Care

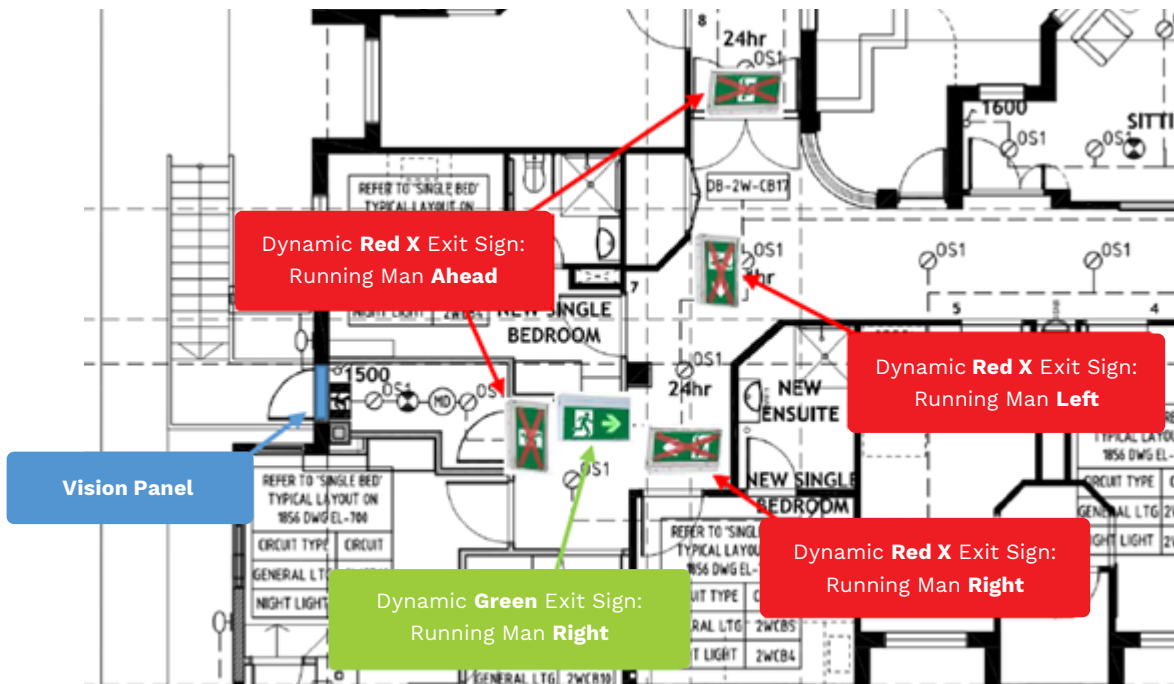
Builder
Stephen Edwards Constructions

Fire Safety Engineer
GHD

Electrical Contractor
N/A – Installed by
Fire Services Contractor (PFS)

Fire Contractor
Premium Fire Services
Herbert Xia
Tel: 02 8880 9930

The research on dynamic signage carried out by the Fire Safety Engineering Group (FSEG) at the University of Greenwich, UK, was a contributing factor to the choice made by GHD engineers to include Dynamic EXIT signage to support the egress solution.



Results

The outcome of the solution was a successful application, installation and commissioning of the CleverEVAC Dynamic EXIT signage solution. It had mitigated the need to undertake additional design and remedial works which would have been required to address the edge-case scenario.

