

# Zoneworks® XT DATA & Zoneworks XT Powerline



**ZONEWORKS®**  
XT



# What is Zoneworks XT DATA and Zoneworks XT Powerline?

Zoneworks XT DATA and Zoneworks XT Powerline is an automatic emergency lighting management system to make mandated testing, reporting and maintenance on emergency lighting and exit signs easier and reducing the burden of compliance.

**Zoneworks XT DATA and Zoneworks XT Powerline are a part of the Zoneworks Ecosystem comprising;**

- **HIVE (RF)**
- **XT DATA**
- **XT Powerline**

**HIVE** is the best choice for all projects unless there are sensitive areas where RF communication platforms are not permitted.

**XT DATA** is the best choice for all new-build projects where RF is not permitted.

**XT Powerline** is best for extensions and additions to existing XT Powerline installations but not recommended for new-build projects or for new sections of existing buildings.

**HIVE, XT DATA or XT Powerline systems can be deployed as individual, standalone systems or combined to form one overall system.**

- **Zoneworks XT DATA and Zoneworks XT Powerline** manages emergency lighting compliance via a simple to use software tool providing access to automatic scheduled testing and powerful reporting tools.
- **Zoneworks XT DATA and Zoneworks XT Powerline**, in comparison to the former Zoneworks LW system, delivers greater flexibility during installation, enhanced communications capability and easier connection to integrated Ethernet networks.
- **Zoneworks XT DATA and Zoneworks XT Powerline Systems** can be configured and supplied with no Wireless/RF devices or Wireless/RF capability.



**Zoneworks XT DATA:** all the benefits and outcomes of Zoneworks XT delivered over a dedicated DATA cable between emergency luminaires where no RF communication is permitted.

**Zoneworks XT Powerline:** utilises the XT Powerline as the primary means of communication between system infrastructure equipment and emergency luminaires/exit signs.

**The Clevertronics Zoneworks XT DATA and Zoneworks XT Powerline Systems can be configured and supplied with no Wireless/RF devices or Wireless/RF capability.**

### **Zoneworks XT DATA and Zoneworks XT Powerline Key features:**

- The Zoneworks XT DATA controller has the capacity to support 3 x cable runs to Clevertronics DATA emergency light fittings. Each cable run supports up to 60 emergency light fittings and 300m distance, up to 180 emergency luminaires per controller.
- Ethernet backbone
- The Zoneworks application can be hosted on a local physical server, or virtual machine and supports multiple, authenticated, parallel users of the system at the same time.
- XT controllers dynamically manage repeating and communications between devices
- Note that XT Powerline controllers manage up to 250 emergency luminaires per XT controller\*

\* For Zoneworks XT Powerline applications the limit is conditional on the distribution board arrangement.

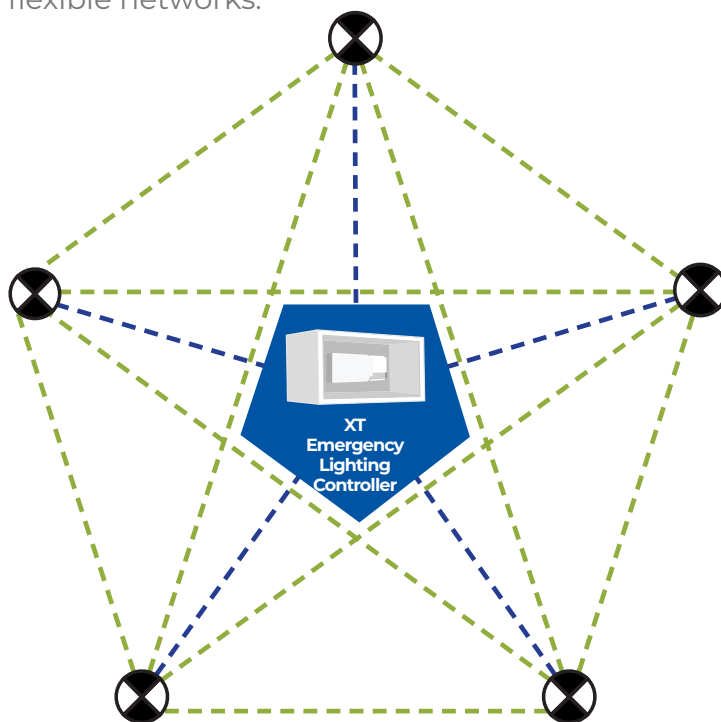




# Zoneworks® XT DATA/Zoneworks XT Communication

## SELF-HEALING MESH COMMUNICATION

XT emergency lighting controllers dynamically manage the communications between exit and emergency luminaires on the Zoneworks network, resulting in more robust and flexible networks.



**ZONEWORKS®**  
XT

## FLEXIBLE SITE AND USER MANAGEMENT

A feature named “Site Group Access” enables facility managers to grant specific access to users across different parts of the network. For example, they might have an agreement with different local contractors to provide emergency lighting maintenance for sections of the system or building. The building manager can give them access to the system, but they’ll only see the parts that are relevant to their responsibility.

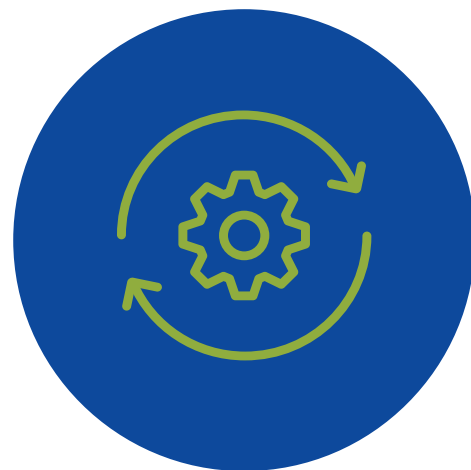
This feature coupled with Active Directory Integration allows system administrators to manage users more effectively.

# XT Powerline

## AUTOMATIC TOPOLOGY MANAGEMENT

The XT controllers always attempt to communicate with an exit or emergency light directly, but if they can't then it will use other fittings to do that for them. Periodically the XT controller will check the status of the network and automatically change the communications pathway if required.

This dynamic repeating capability results in more robust networks that are essentially self-healing if conditions change over time.



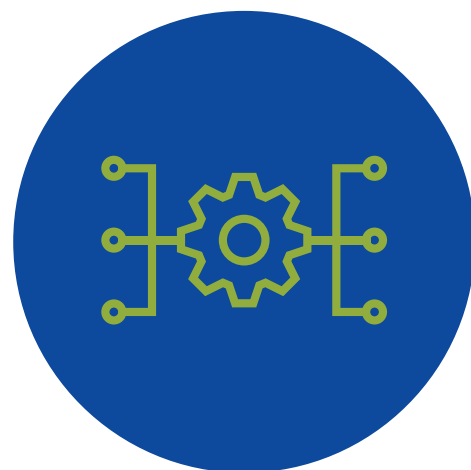
## BUILDING MANAGEMENT SYSTEMS INTEGRATION

The Zoneworks XT DATA and Zoneworks XT Powerline platforms include the capability to integrate with 3rd party Integrated Building Management Systems platforms. This allows for the integration of the emergency lighting information into a single, consolidated building management system, alongside other building services including general lighting, ventilation, security, access, and more.

We offer integration with 3rd party Building Management Systems on two levels:

- a) High Level via a Direct Structured Query Language (SQL) database access where all information associated with each emergency light fitting can be obtained (no additional cost).**
- b) High Level MQTT interface for integration of Zoneworks HIVE compliance DATA to third party supervisory control systems and dashboards (like Building Management Systems).**

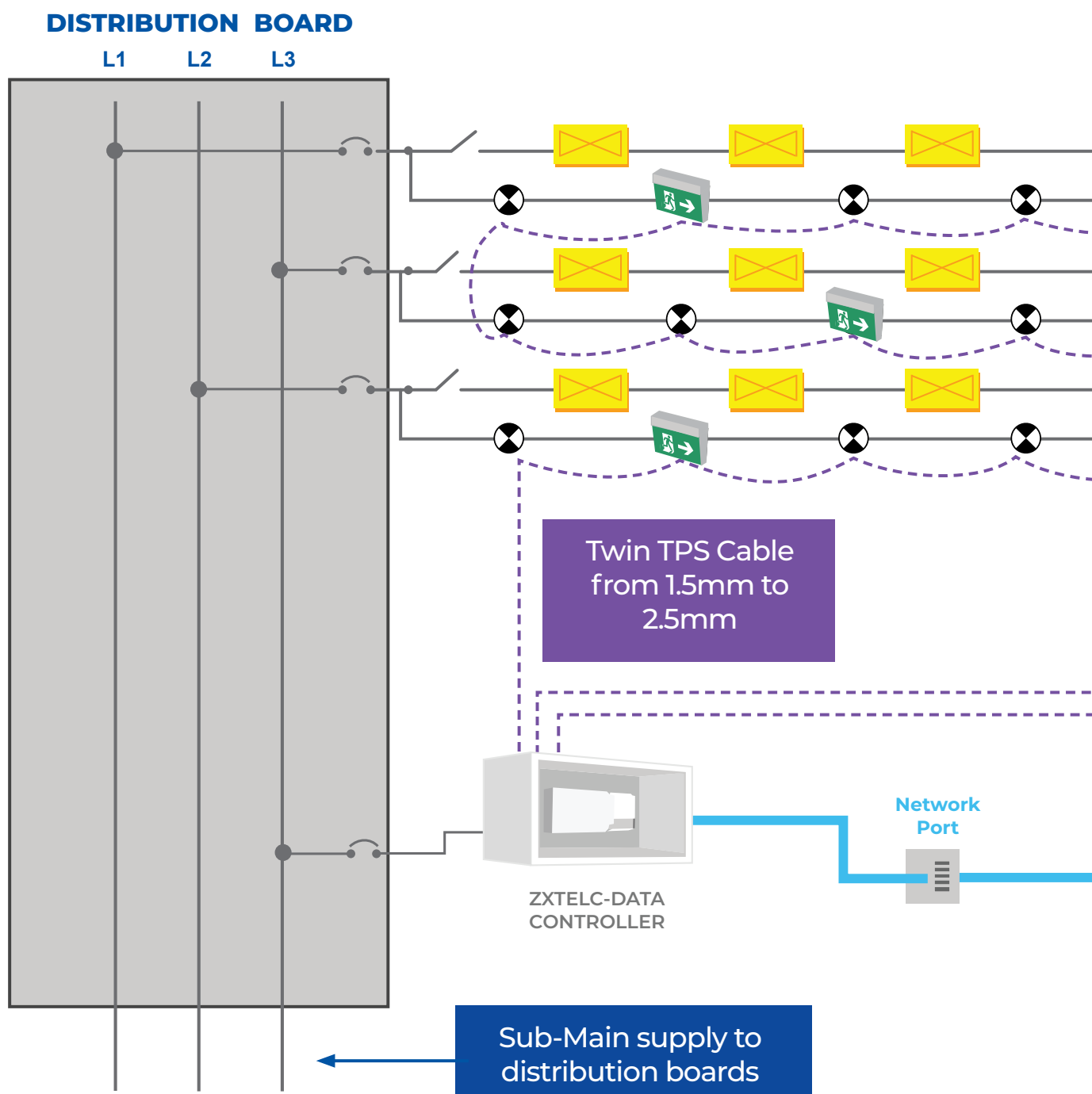
Clevertronics can provide a "System view" for the BMS integrator to access only the relevant information for each site.



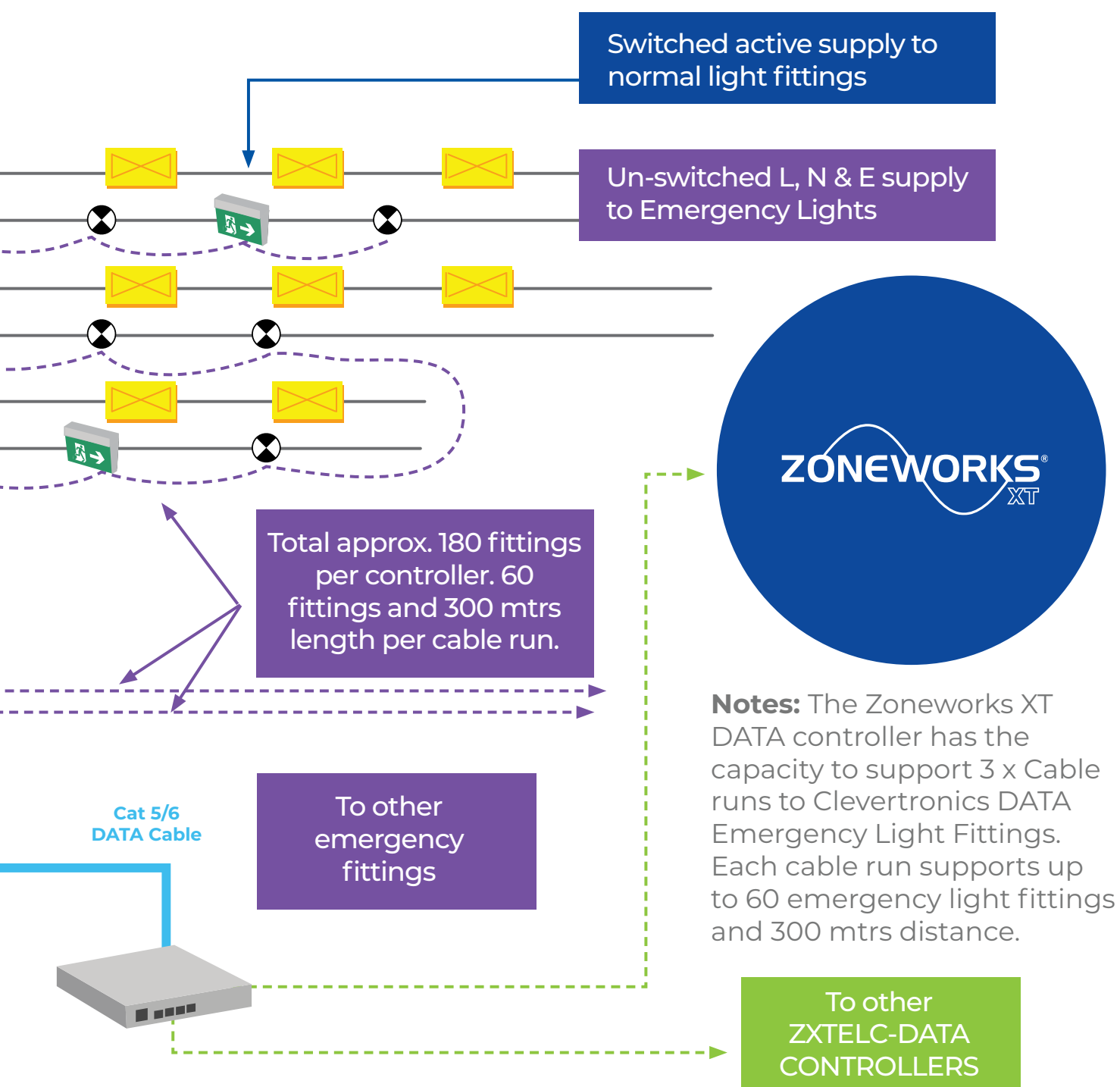
# Zoneworks® XT DATA

## Wiring Schematic

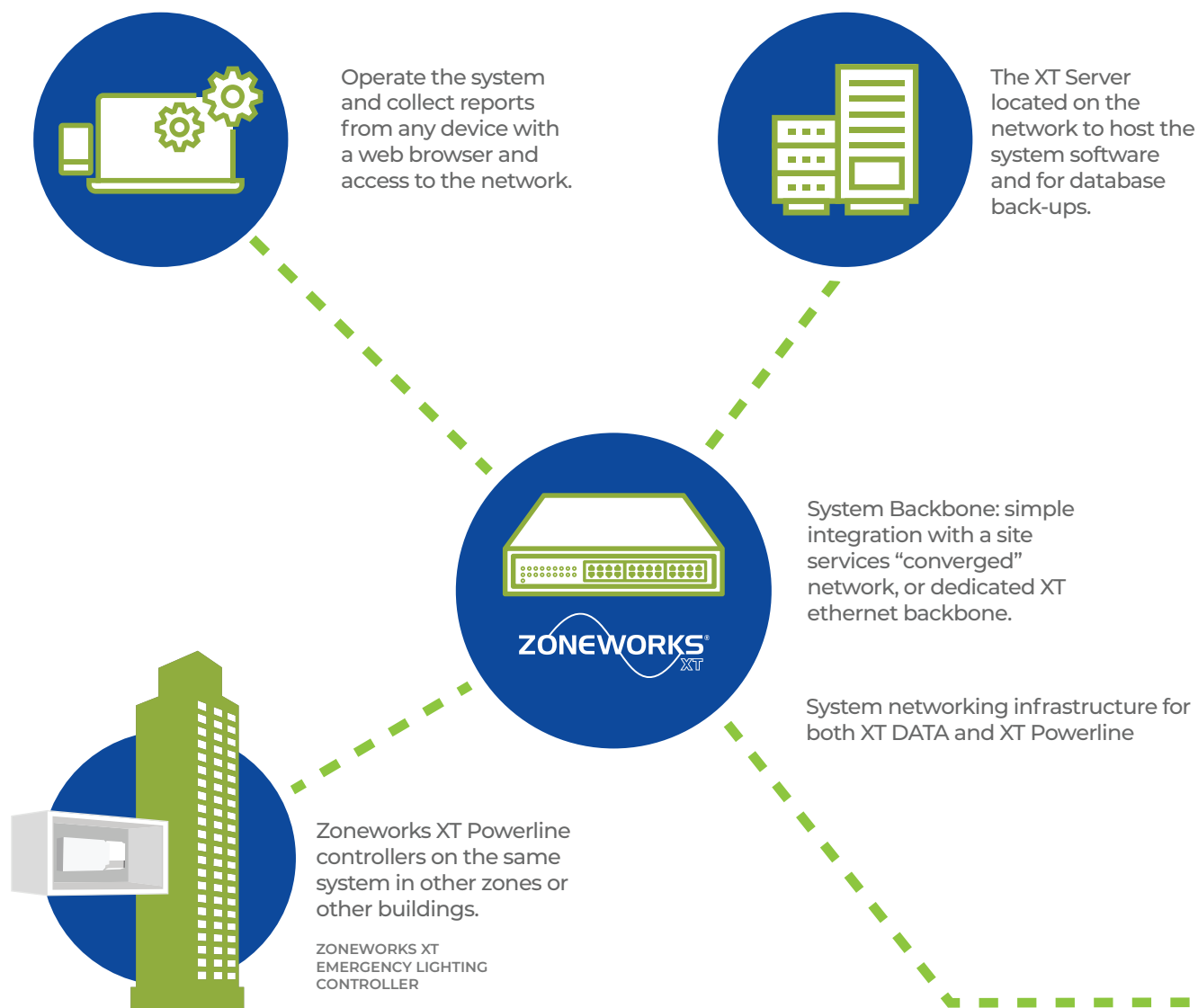
for all new build  
on existing XT Powerline sites, where RF is not



Id sites, or additional buildings  
t permitted or suitable

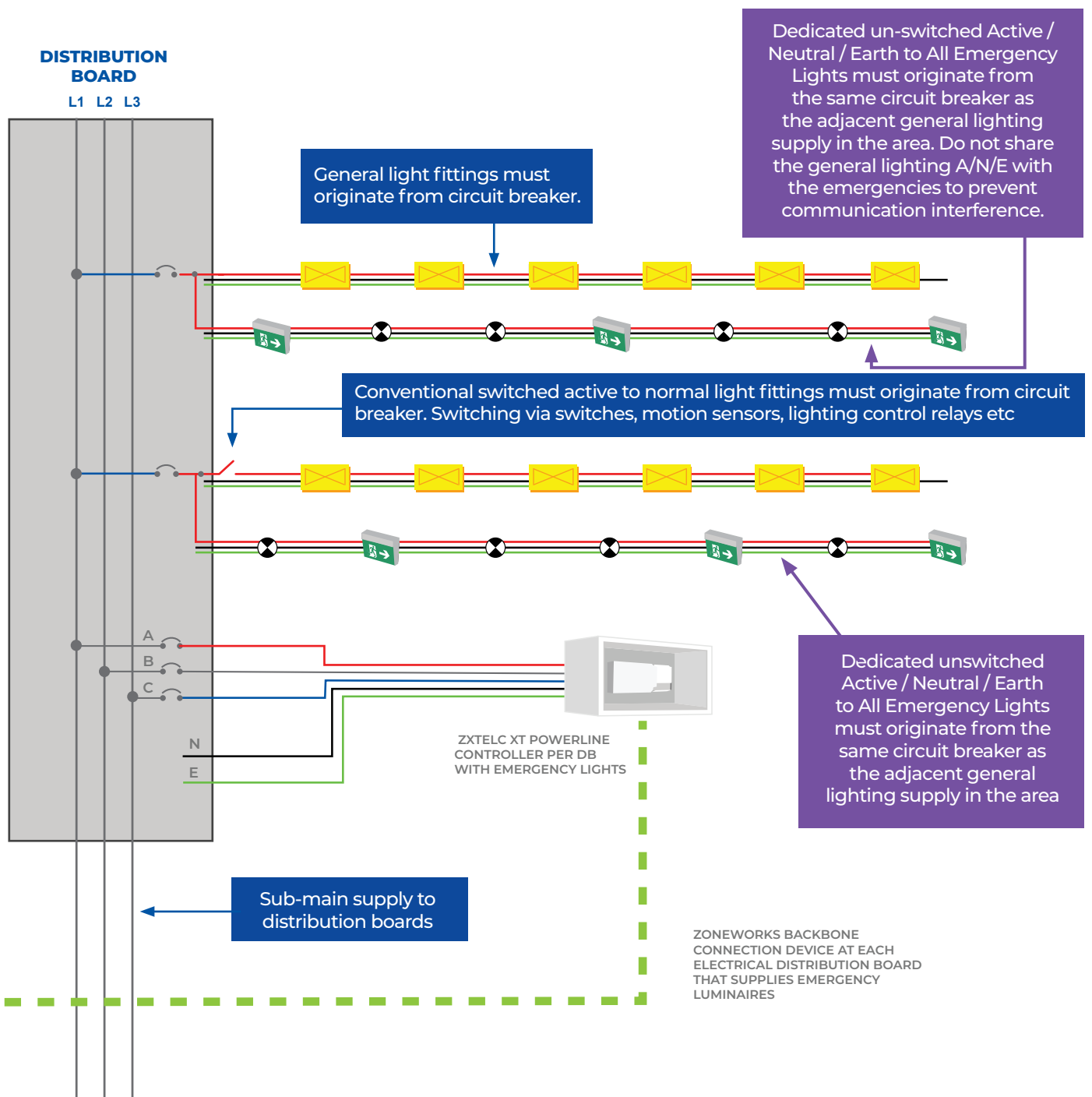


# Zoneworks® XT Powerline Wiring Schematic for extensions





# s and additions to existing sites



# Zoneworks® XT Applications

## Include:

- Maintaining and extending Zoneworks XT DATA and Zoneworks XT Powerline Systems.
- Where RF is not suitable

## RELATED

- **MILITARY AND DEFENSE**
- **SECURE DATA CENTRES**
- **CORRECTIONS FACILITIES**
- **SECURE FACILITIES**

where no RF is permitted  
or not suitable



**MILITARY &  
DEFENCE**



**CORRECTIONS  
FACILITIES**



**SECURE DATA  
CENTRES**



**SECURE FACILITIES**





## Military & Defence

**Project Name**  
Australian Defence  
Building Asset

**Year**  
2022

**Location**  
Williamstown, NSW

**Number of Fittings**  
2759

**Industry Application**  
Defence

**Contractor**  
Multiple Stages

**Project Type**  
New Emergency  
Lighting Installation

**Product Range**  
LP Premium Lithium

**Testing System**  
Zoneworks XT



## Gatton Correctional Facility

**Project Name**  
Gatton Correctional  
Facility

**Number of Fittings**  
2008

**Location**  
Spring Creek, QLD

**Contractor**  
Fredon Industries  
QLD

**Industry Application**  
Correctional Facility

**Product Range**  
L10 Lithium  
Nanophosphate

**Project Type**  
New Emergency  
Lighting

**Testing System**  
Zoneworks XT

**Year**  
2024



## Military & Defence

**Project Name**  
Australian Defence  
Building Asset

**Product Range**  
LP Premium Lithium  
& L10 Lithium  
Nanophosphate

**Location**  
QLD Australia

**Testing System**  
Zoneworks XT DATA

**Industry Application**  
Defence

**Project Type**  
New Emergency  
Lighting

**Number of Fittings**  
872

**Victoria**

1 Caribbean Drive  
Scoresby VIC 3179  
Phone: +61 3 9559 2700  
Fax: +61 3 9559 2799

**New South Wales**

9 Distribution Place  
Seven Hills NSW 2147  
Phone: +61 2 8805 6400  
Fax: +61 2 8805 6444

**Queensland**

1/140 Wecker Road  
Mansfield QLD 4122  
Phone: +61 7 3442 9700  
Fax: +61 7 3442 9777

**Western Australia**

12 Milly Court  
Malaga WA 6090  
Phone: +61 8 9207 0000  
Fax: +61 8 9248 3725

**South Australia**

Unit 1/136 Mooringe Ave  
North Plympton SA 5037  
Phone: +61 8 8301 8800  
Fax: +61 8 8351 8286

**Auckland**

Unit 22/761 Great South Road  
Penrose Auckland 1061  
Phone: +64 800 548 448

**Christchurch**

163C Wordsworth Street  
Sydenham Christchurch 8023  
Phone: +64 800 548 448

**United Kingdom**

806 Oxford Avenue  
Slough Trading Estate  
SL1 4LN  
Phone: 01895 430 255

**clevertronics.com.au**

**clevertronics.co.nz**

**clevertronics.co.uk**