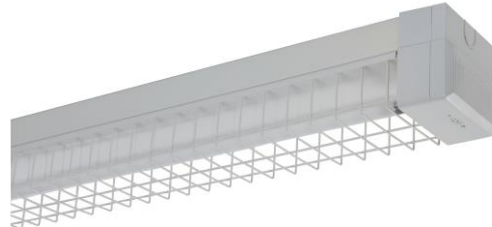




## CLEVERTRONICS LP PREMIUM SUSTAINED LED TUBE EMERGENCY BATTEN WITH MICROWAVE SENSOR & LED POD



### PRODUCT INFORMATION

Catalogue Number	CBS2L4-WG-MS-CT
Description	Wide Body Wireguard LED Tube Batten with Microwave Sensor and LED Emergency
Construction	Powder Coated Steel
Mounting	Surface Mount
Dimensions L x W x H	1274mm x 120mm x 110mm
Operating Mode	Sustained/Combined Non-Maintained. On/off control of the LED tube via switched active input. Non-Maintained LED emergency function.
Testing System	Clevertest
Diffuser	NA- Wire Guard
LED Tube(s)	2 x 1200mm LED Tube 840 G13 1760lm 50,000 Hours
Operating Voltage	240V, 50Hz
Charging Method	Intelligent current limited constant voltage charger
Emergency Lamp Source	2 x 3W LED (Lifetime warranty on the lamp head and loom assembly) No dome cover required
IP Rating	IP20
Operating Temperature	10° to 40°C
Power Consumption	33W (Lamps On) 1.4W (Lamps Off)
AS2293 Classification	C0 = D40 C90 = D40

### REPLACEMENT PARTS

PART NUMBER	DESCRIPTION
3170070	Lamp, LED Tube 16W 4000K
1100640	Lamp, Lifelight Pro Head and Heatsink
1120320	Lamp Holder T8
2500130	Wireguard 28/36W Wide
2900012	Shanghai End Cap
1550050	Battery, LP 3.2V 3200 mAh 70mm Lead, No Bracket
8002530	PCA, LP Lifelight Driver ZWC, CT#10260-L3
8001730	PCA, Clevertest Node