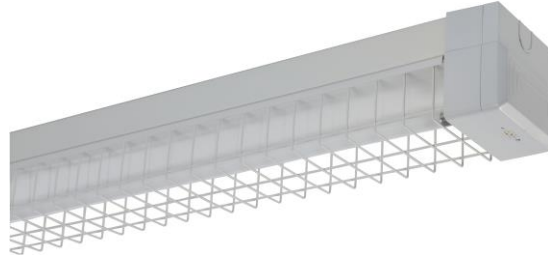




CLEVERTRONICS 1 x 28W WIRE GUARD BATTEN WITH LED EMERGENCY AND MICROWAVE SENSOR CONTROL



PRODUCT INFORMATION

Catalogue Number	LBS128M-WG-A2-MS
Description	1 x 28 Watt Wire Guard Batten with LED Emergency and Microwave Sensor Control
Construction	Powder Coated Steel body with Polycarbonate lamp holders.
Mounting	Surface Mount
Dimensions L x W x H	1274mm x 120mm x 110mm
Operating Mode	Maintained. On/Off control of the fluorescent lamp via microwave sensor (presence detection) Maintained LED emergency function (LEDs permanently on).
Testing System	Manual Test Switch
Charging Method	Intelligent current limited constant voltage charger
Diffuser	NA – Wire Guard
Ballast	Electronic , 1x14-35W, EEI=A2
Lamp(s)	T5 Cool White Tri-Phosphorous 28W/840
Operating Voltage	240V
Power Consumption	33.6 Watts (lamps ON) 3.1 Watts (Fluorescent Lamps OFF - Low level standby light)
IP Rating	IP20
Operating Temperature	0° to 40°C
AS2293 Classification	C0=D63 C90=C63

REPLACEMENT PARTS

PART NUMBER	DESCRIPTION
1310060	Ballast, Philips HF-P, 1 x 14-35W, EEI=A2
3100210	Lamp(s) 28W/840 T5 COOLWHITE TUBE
1120215	Lamp Holder T5
1120212	Lamp Holder Adaptor 14W T8>T5
2500130	Wire Guard 28W Wide
2900012	End Caps
3760210	Emergency End Cap control
1190116	Motion Sensor Assembly