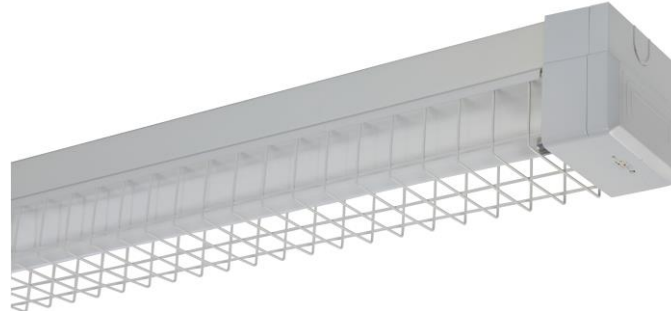




CLEVERTRONICS LP PREMIUM WIRE GUARD BATTEN WITH INTEGRATED LED EMERGENCY



PRODUCT INFORMATION

Catalogue Number	CBS236S-WG-ZW
Description	2 x 36 Watt LP Wire Guard Batten With Premium Lithium LED Emergency
Construction	Powder Coated Steel body and Polycarbonate Lamp Holders
Mounting	Surface Mount
Dimensions L x W x H	1274mm x 120mm x110mm
Operating Mode	Sustained
Testing System	Zoneworks Computerized Testing
Charging Method	Intelligent current limited constant voltage charger
Ballast	Electronic , 2x36W, EEI=A3
Lamp(s)	T8 Cool white Tri-Phosphor 36W/840
Operating Voltage	240V
Power Consumption	73.3W (Lamps ON) 1.3W Standby
IP Rating	IP20
Operating Temperature	10° to 40°C
AS/NZ2293 Classification	C ₀ =D40 C ₉₀ =D40

REPLACEMENT PARTS

PART NUMBER	DESCRIPTION
1310226	Ballast, VS FBC236 2x36W EEI = A3
3100380	Lamp(s) T8 36W/840 COOLWHITE TUBE
1120320	Lamp Holder T8
2500130	Wire Guard 28/36W Wide
2750064	LP Batten Emergency End Cap (includes LED Assembly and Battery)
1550050	Battery, LP 3.2V 3200mAh 70mm lead,no BRKT.
8002530	PCA: LP Lifelight Driver, Zoneworks Compatible
8001450	Network: Zoneworks Powerline Node