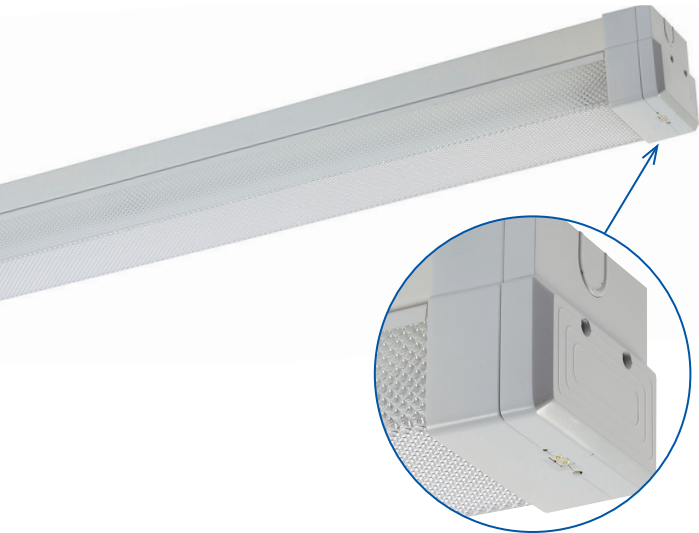


T5 LP™ PREMIUM SABRE DIFFUSED BATTEN



Thermal isolation pod

UP TO TWICE THE BATTERY LIFE - Complete with LP™ Premium lithium iron phosphate technology.

WIDE BODY - To cover junction boxes and provides ample space for heat generating components.

TESTING OPTIONS - Clevertest™, DLI compatible and Zoneworks® computerised testing options available in our Premium range.

The LP™ Premium diffused batten is a non-maintained, C0=D40 C90=D40 classified surface mounted luminaire. Its features include an LP™ Premium lithium battery which is housed in a thermal isolation pod at the end of the batten.

UP TO
TWICE
THE
BATTERY LIFE

As the pod is external to the batten, the battery is protected from high temperatures that are normally found within the batten thereby extending battery life. This combination of lithium battery and thermally stable housing provides for up to twice the battery life, when compared to Premium NiCd products. Maintenance cost savings of up to 50% are achieved as there are less failures and hence labour costs over time.

UP TO
50%
MAINTENANCE
SAVINGS

The battery is a lithium iron phosphate battery which contains no known carcinogens or heavy metal contaminants (unlike Nickel Cadmium and Nickel Metal Hydride batteries) and as they have twice the battery life they are the more environmentally responsible option.

LP™ Premium lithium battens are available in either diffused, wire guard or IP65 weatherproof combinations, which address most emergency lighting applications including basement car parks, warehouses, fire stairs, industrial sites, commercial and public areas.

HAWKEYE IS NOW AVAILABLE IN THE LP™ PREMIUM BATTEN RANGE

UP TO
88%
ENERGY
SAVINGS*

The HAWKEYE microwave movement sensor is integrated into the body of the batten and is designed to turn off the batten's light source when no presence is detected by the sensor. The ability to turn the light source off when not required means less running time, saving energy and maintenance costs and money.



*Based on 2x36W batten running 2 hours on per day with Hawkeye microwave sensor.

T5 LP™ PREMIUM SABRE DIFFUSED BATTEN

SEGMENT - LAMP TYPE	PART NUMBER - STANDARD 240V	
Fluorescent Lamp	A2 Electronic Ballast	DLI Ballast
240V 1x14W	FBS114-DIF-A2	FBS114-DIF-DB
240V 2x14W	FBS214-DIF-A2	FBS214-DIF-DB
240V 1x28W	FBS128-DIF-A2	FBS128-DIF-DB
240V 2x28W	FBS228-DIF-A2	FBS228-DIF-DB

SPECIFICATIONS - STANDARD 240V	
Fluorescent Lamp	L x W x H (mm)
1x14W	630 x 120 x 110
2x14W	630 x 120 x 110
1x28W	1238 x 120 x 110
2x28W	1238 x 120 x 110

SEGMENT - LAMP TYPE	PART NUMBER & TESTING OPTIONS - LP EMERGENCY BATTEN - NON MAINTAINED EMERGENCY POD				
A2 Electronic Ballast	Single-point	Clevertest™	DATA	DLI*	Zoneworks
LP 1x14W SUSTAINED	CBS114S-DIF-A2	CBS114S-DIF-A2-CT	CBS114S-DIF-A2-DATA	CBS114S-DIF-A2-DLI	CBS114S-DIF-A2-ZW
LP 2x14W SUSTAINED	CBS214S-DIF-A2	CBS214S-DIF-A2-CT	CBS214S-DIF-A2-DATA	CBS214S-DIF-A2-DLI	CBS214S-DIF-A2-ZW
LP 1x28W SUSTAINED	CBS128S-DIF-A2	CBS128S-DIF-A2-CT	CBS128S-DIF-A2-DATA	CBS128S-DIF-A2-DLI	CBS128S-DIF-A2-ZW
LP 2x28W SUSTAINED	CBS228S-DIF-A2	CBS228S-DIF-A2-CT	CBS228S-DIF-A2-DATA	CBS228S-DIF-A2-DLI	CBS228S-DIF-A2-ZW

SEGMENT - LAMP TYPE	PART NUMBER & TESTING OPTIONS - LP EMERGENCY BATTEN - NON MAINTAINED EMERGENCY POD				
A1 DLI Electronic Ballast	Single-point	Clevertest™	DATA	DLI*	Zoneworks
LP 1x14W SUSTAINED	CBS114S-DIF-DB	CBS114S-DIF-DB-CT	CBS114S-DIF-DB-DATA	CBS114S-DIF-DB-DLI	CBS114S-DIF-DB-ZW
LP 2x14W SUSTAINED	CBS214S-DIF-DB	CBS214S-DIF-DB-CT	CBS214S-DIF-DB-DATA	CBS214S-DIF-DB-DLI	CBS214S-DIF-DB-ZW
LP 1x28W SUSTAINED	CBS128S-DIF-DB	CBS128S-DIF-DB-CT	CBS128S-DIF-DB-DATA	CBS128S-DIF-DB-DLI	CBS128S-DIF-DB-ZW
LP 2x28W SUSTAINED	CBS228S-DIF-DB	CBS228S-DIF-DB-CT	CBS228S-DIF-DB-DATA	CBS228S-DIF-DB-DLI	CBS228S-DIF-DB-ZW

*DLI battens are listed with the LP LED D40 Emergency Pod with DLI compatible emergency control packs.

SPECIFICATIONS - LP PREMIUM DIFFUSED EMERGENCY BATTEN WITH NON MAINTAINED LED EMERGENCY POD

Fluorescent Lamp	L x W x H (mm)	C0	C90
1x14W	666 x 120 x 110	D40	D40
2x14W	666 x 120 x 110	D40	D40
1x28W	1274 x 120 x 110	D40	D40
2x28W	1274 x 120 x 110	D40	D40


240V AND LP PREMIUM

Wide body fluorescent batten. Wire guard or diffused body options to choose from.

240V and LP PREMIUM emergency versions available. T5, 840 Tri Phosphor fluorescent lamps included.

TESTING OPTIONS

 Exit and Emergency luminaires automatically test every six months.

 A real-time, automatic monitoring and testing facility for emergency luminaires.

SPACING TABLE & MOUNTING HEIGHTS

Classification	2.1m	2.4m	2.7m	3m	3.3m	3.6m	4m	5m	6m	7m	8m	10m	15m
D40	16.7	17.4	18.0	18.6	19.1	19.6	20.1	21.3	22.1	22.7	23.0	23.1	19.4

Based on minimum light level of 0.2 lux

Version: October 2014-4

Please check our website for your closest Clevertronics office and local representative. Due to changes in industry standards and Clevertronics policy of product improvement, specification details are subject to change without notice.

www.clevertronics.com.au

