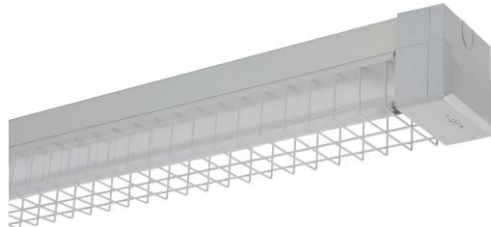


CLEVERTRONICS LP PREMIUM SUSTAINED LED TUBE EMERGENCY BATTEN WITH MICROWAVE SENSOR & LED POD



PRODUCT INFORMATION

Catalogue Number	CBS1L4-WG-MS-ZW
Description	Wide Body Wireguard LED Tube Batten with Microwave Sensor and LED Emergency
Construction	Powder Coated Steel and ABS/Polycarbonate End Caps
Mounting	Surface Mount
Dimensions L x W x H	1274mm x 120mm x 110mm
Operating Mode	Sustained/Combined Non-Maintained. On/off control of the LED tube via switched active input. Non-Maintained LED emergency function.
Testing System	Zoneworks Computerized Testing
Diffuser	Wire Guard
LED Tube(s)	1 x 1200mm LED Tube 840 G13 1760lm 50,000 Hours
Operating Voltage	240V, 50Hz
Charging Method	Intelligent current limited constant voltage charger
Emergency Lamp Source	2 x 3W LED (Lifetime warranty on the lamp head and loom assembly) No dome cover required
IP Rating	IP20
Operating Temperature	1° to 40°C
Power Consumption	17.9W (Lamps On) 1.9W (Lamps Off)
AS2293 Classification	C ₀ = D40 C ₉₀ = D40

REPLACEMENT PARTS

PART NUMBER	DESCRIPTION
3170070	Lamp, LED Tube 16W 4000K
2750064	LP Batten Emergency End Cap (includes LED Assembly and Battery)
1120320	Lamp Holder T8
2500130	Wireguard 28/36W Wide
2900012	Shanghai End Cap
1550050	Battery, LP 3.2V 3200 mAh 70mm Lead, No Bracket
8002530	PCA, LP Lifelight Driver ZWC, CT#10260-L3
8001450	Network, Zoneworks Powerline Node