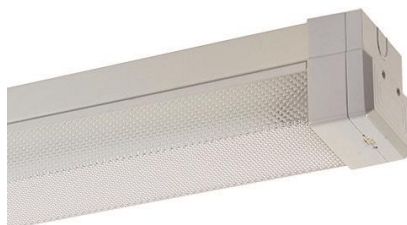


CLEVERTRONICS L10 DIFFUSED PRO BATTEN WITH DLI BALLAST



PRODUCT INFORMATION

Catalogue Number	LBS114S-DIF-DB-DLI
Description	1 x 14 Watt L10 Optimum, Pro diffused batten with LED emergency POD and DLI ballast
Construction	Powder coated steel body, acrylic prismatic diffuser and ABS/polycarbonate end caps
Mounting	Surface mount
Dimensions L x W x H	720mm x 160mm x 105mm
Operating Mode	Sustained
Testing System	DLI compatible
Charging Method	Intelligent Current Limited Constant Voltage
Diffuser	Prismatic
Ballast	DLI Dimmable, EEI=A1
Lamp(s)	T5 Cool White Tri-Phosphorous 14W/840
Operating Voltage	240V AC; 50Hz
Power Consumption	16 Watts (lamp on), 0.4 Watts (lamps off)
IP Rating	IP20
Operating Temperature	1°C to 40°C
AS2293 Classification	C ₀ =D63 C ₉₀ =D63

REPLACEMENT PARTS

PART NUMBER	DESCRIPTION
1320003	1x14/24w Dli Dimmable Ballast, A1
3100010	14w/840 T5, Coolwhite Tube
1120195	Lampholder 14w T8 > T5 Adapt, T/S 1120215
LLIFE-PRO-CKIT-DLI-NP	LLIFE-PRO-CKIT-DLI-NP
8002200	PCA:DLI Node, #CT10410-A3



Version: July 2016-I

www.clevertronics.com.au

