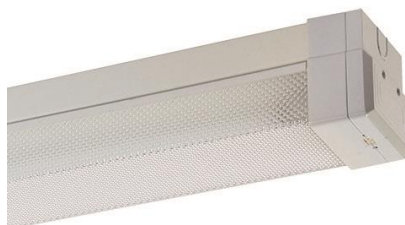


CLEVERTRONICS L10 DIFFUSED PRO BATTEN WITH DLI BALLAST



PRODUCT INFORMATION

Catalogue Number	LBS128S-DIF-DB-DLI
Description	1 x 28 Watt L10 Optimum, Pro diffused batten with LED emergency POD and DLI ballast
Construction	Powder coated steel body, acrylic prismatic diffuser and ABS/polycarbonate end caps
Mounting	Surface mount
Dimensions L x W x H	1274mm x 120mm x 110mm
Operating Mode	Sustained
Testing System	DLI compatible
Charging Method	Intelligent Current Limited Constant Voltage
Diffuser	Prismatic
Ballast	DLI Dimmable, EEI=A1
Lamp(s)	T5 Cool White Tri-Phosphorous 28W/840
Operating Voltage	240V AC; 50Hz
Power Consumption	31 Watts (lamp on), 0.4 Watts (lamps off)
IP Rating	IP20
Operating Temperature	1°C to 40°C
AS2293 Classification	C ₀ =D63 C ₉₀ =D63

REPLACEMENT PARTS

PART NUMBER	DESCRIPTION
1320006	1x28/54w Dli Dimmable Ballast, A1
3100210	28w/840 T5, Coolwhite Lamp
1120212	Lampholder 28/35w T8>T5 Adapt,T/S1120215
LLIFE-PRO-CKIT-DLI-NP	LLIFE-PRO-CKIT-DLI-NP
8002200	PCA:DLI Node, #CT10410-A3



Version: July 2016-I

www.clevertronics.com.au

