



## CLEVERTRONICS L10 LED SUPALITE (Zoneworks)

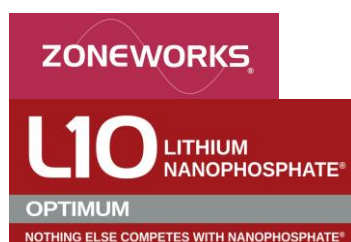


### PRODUCT INFORMATION

Catalogue Number	LFLLED-ZW
Description	L10 Optimum Supalite LED Flood Unit, Surface Mounted Emergency Light
Construction	Polycarbonate
Mounting	Surface Mounted. Supplied with flex and plug (the flex and plug can be removed to allow for a hard wired connection)
Dimensions L x W x H	Main enclosure - 282mm (W) x 137mm (H) x 64mm (D) Total height including LED Heads 225mm.
Weight	1.3kg
Operating Mode	Non-maintained
Testing System	Zoneworks computerised testing
Battery	Lithium Nanophosphate, 3.3V 5000mAh
Charging Method	Intelligent Current Limited Constant Voltage
Lamp(s)	2 x LED Heads (adjustable), 185lm per lamp head
Operating Voltage	240V AC; 50Hz
Power Consumption	0.4 Watts (Standby), 2.2 Watts (Max)
IP Rating	IP20
Operating Temperature	1°C to 40°C
AS2293 Classification	C <sub>0</sub> =N/A C <sub>90</sub> =N/A

### REPLACEMENT PARTS

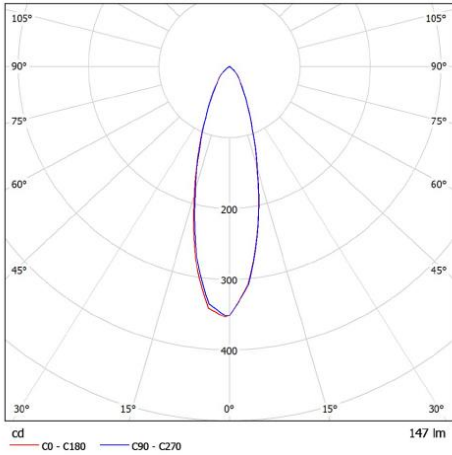
PART NUMBER	DESCRIPTION
1530230	BATTERY:L10 3.3V 5AH. 200mm lead.Brkt.
8002390	PCA:LL-Pro L10 Driver 550mA .#CT10142-L5
1100955	LED Flood Lamp Head Ass, Cable & Cnnctr.
8001450	PCA:Powerline Node ZW, #CT10310-A6



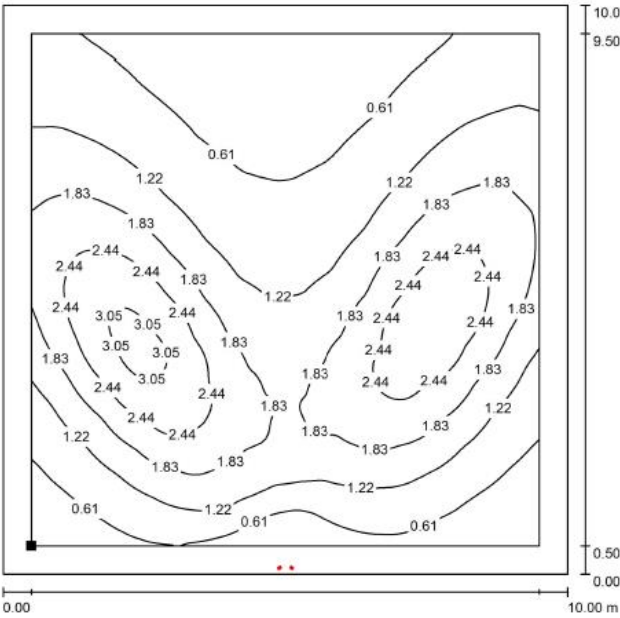
# Spacing Guidance

## Polar curve for a single LED lamp head

Luminous emittance 1:



Isolux plot and value table for a 10m x 10m area serviced by a Supalite with each LED lamp head tilted down 30°, rolled out 30°. The Supalite mounted on the wall at a height of 3m (values in lux).



0.65	0.56	0.46	0.37	0.32	0.29	0.28	0.31	0.34	0.41	0.54	0.67	0.78	0.84
0.77	0.67	0.54	0.43	0.37	0.33	0.32	0.35	0.40	0.49	0.63	0.79	0.91	0.98
0.91	0.80	0.63	0.51	0.42	0.38	0.36	0.41	0.46	0.58	0.75	0.95	1.07	1.14
1.08	0.96	0.77	0.60	0.49	0.43	0.42	0.46	0.54	0.69	0.89	1.12	1.24	1.28
1.28	1.15	0.93	0.72	0.58	0.50	0.48	0.53	0.62	0.82	1.07	1.33	1.44	1.43
1.52	1.38	1.13	0.86	0.67	0.58	0.56	0.61	0.73	0.97	1.27	1.55	1.66	1.58
1.78	1.64	1.37	1.04	0.79	0.68	0.64	0.70	0.85	1.15	1.51	1.80	1.89	1.73
2.04	1.94	1.65	1.25	0.95	0.78	0.74	0.82	1.00	1.36	1.78	2.06	2.10	1.90
2.29	2.25	1.97	1.50	1.12	0.92	0.86	0.95	1.17	1.60	2.07	2.33	2.27	1.96
2.49	2.57	2.31	1.79	1.32	1.07	0.99	1.10	1.36	1.86	2.35	2.56	2.39	1.97
2.63	2.86	2.64	2.10	1.54	1.23	1.14	1.26	1.56	2.12	2.60	2.72	2.44	1.91
2.65	3.02	2.92	2.38	1.76	1.40	1.30	1.41	1.75	2.33	2.77	2.77	2.40	1.79
2.53	3.05	3.11	2.65	2.00	1.59	1.44	1.58	1.94	2.49	2.82	2.69	2.22	1.58
2.33	2.92	3.21	2.79	2.19	1.75	1.59	1.73	2.06	2.50	2.80	2.50	1.99	1.38
1.99	2.62	3.06	2.88	2.33	1.90	1.73	1.87	2.18	2.54	2.54	2.20	1.66	1.14
1.69	2.26	2.78	2.76	2.37	2.00	1.77	1.92	2.15	2.34	2.31	1.90	1.42	0.95
1.37	1.85	2.36	2.55	2.27	1.98	1.80	1.87	2.00	2.15	1.97	1.56	1.15	0.77
1.07	1.47	1.92	2.21	2.03	1.77	1.68	1.62	1.71	1.81	1.61	1.25	0.91	0.62
0.82	1.13	1.51	1.79	1.72	1.53	1.41	1.28	1.35	1.43	1.24	0.95	0.69	0.48
0.62	0.86	1.14	1.38	1.37	1.17	0.82	0.96	1.04	1.05	0.91	0.69	0.50	0.35
0.46	0.61	0.83	0.98	0.98	0.64	0.41	0.49	0.74	0.76	0.64	0.49	0.36	0.25

