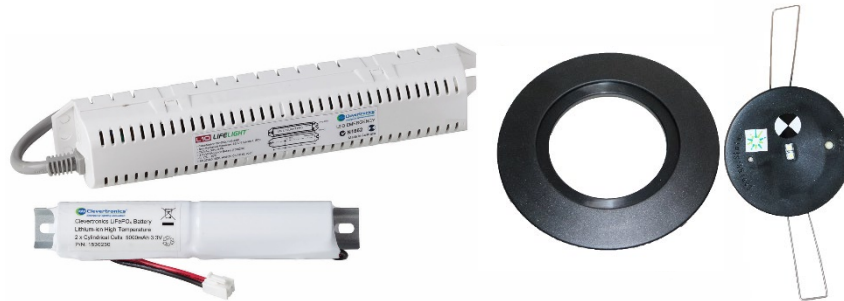


CLEVERTRONICS L10 MAINTAINED LIFELIGHT PRO RECESSED EMERGENCY, BLACK



PRODUCT INFORMATION

| | |
|--------------------------|--|
| Catalogue Number | LLIFEM-PRO-BLK |
| MIC | AUT01310140002 |
| Description | L10 Optimum Lithium Nanophosphate Maintained Lifelight PRO, High Performance, Recessed Emergency Light, Enabled with Clevertest Plus |
| Mounting | Recessed Ceiling |
| Dimensions L x W x H | 232mm x 40mm x 40mm (Control Pack), 60mm Head Diameter (95mm with adaptor plate) |
| Ceiling hole cut-out | 51mm, 85mm (with adaptor plate) |
| Minimum ceiling depth | 200mm, 120mm (with adaptor plate) |
| Operating Mode | Maintained (LED permanently on with no switch control) |
| Testing System | Clevertest Plus Enabled (Not activated by default) |
| Battery | Lithium Nanophosphate, 3.3V 5000mAh |
| Charging Method | Intelligent current limited constant voltage charger |
| Lamps(s) | 2 x 3W LED (Lifetime warranty on the lamp head and loom assembly) |
| Operating Voltage | 240V 50Hz |
| Power Consumption | 2.4W (Standby), 4.7W (Max during 16 hour charge) |
| IP Rating | IP20 |
| Operating Temperature | 1° to 40°C (Ambient) |
| AS/NZ2293 Classification | C ₀ =D80 C ₉₀ =D80 |

REPLACEMENT PARTS

| PART NUMBER | DESCRIPTION |
|----------------------------------|--|
| 1100871 | Lifelight Pro Head Assbly,Rnd,Lge+Ring,LT,Blk,Gen2 |
| 1530230 | Battery: 3.3V 5Ah.Li-ion, 200mm lead with Bracket |
| AUM01370040001 LLIFE-PRO-CKIT | Lifelight Pro, Control Only, L9, L10, OWC |

The product details described in this document are current as at the version date of the document. We reserve the right to change product design, specifications or materials (Specifications) as part of our continuous improvement program. Please confirm the applicable Specifications at the time of placing your order