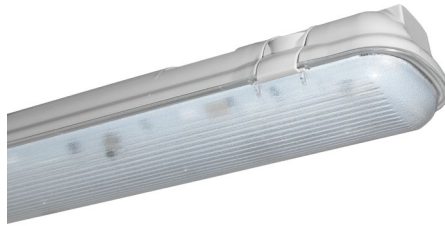


## CLEVERTRONICS 24V TEMPORARY WEATHERPROOF BATTEN



### PRODUCT INFORMATION

Part Number	TWB4LED24V-FPBE
Description	Temporary 24V 4ft weatherproof batten with a short length flex and plug from both ends for temporary lighting applications on construction sites (supports end-to-end cabling)
Construction	ABS Base and PC Diffuser
Mounting	Chain Suspension or Surface mount (brackets supplied for surface mounting – no need to open luminaire)
Dimensions L x W x H	1268mm x 85mm x 62mm
Weight	1.6kg
Diffuser	Polycarbonate
Driver / Ballast	2 x Stallion 24V constant current driver
Lamp(s)	LED strip module, 4,000K natural white, 50,000 hours
Operating Voltage	18-28V DC
Total lumen output	3800 lm @ 113lm/W
Power Consumption	33 Watts
IP Rating	IP65
IK Rating	IK08 (Diffuser), IK06 (Base)
Operating Temperature	0°C to 40°C

*The product details described in this document are current as at the version date of the document. We reserve the right to change product design, specifications or materials (Specifications) as part of our continuous improvement program. Please confirm the applicable Specifications at the time of placing your order*

**TEMP**  
TEMPORARY